

# Regional Growth Strategy Service

December 4, 2018  
Committee of the Whole

# What is the RGS?



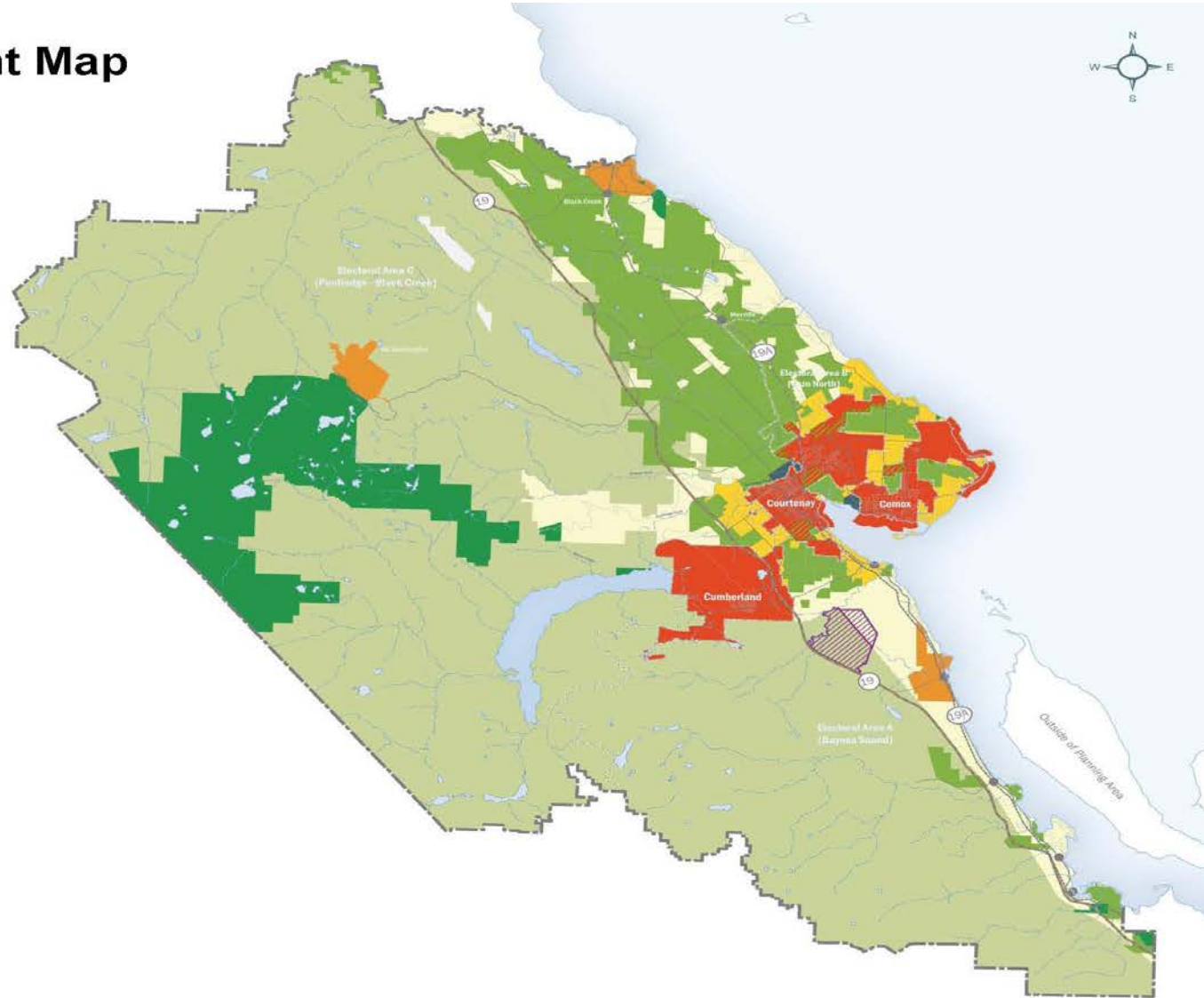
- Shared vision, goals and objectives
- Strategic partnership among rural areas and municipalities
- 20 year plan to inform land use and infrastructure decision making
- Guide to managing growth
- Framework for protecting high quality of life in the rural and urban areas

# Guiding Principles

- Protect natural features/systems
- Protect unique character, needs and interests of rural and urban areas
- Use land efficiently
- Provide transportation options
- Maximize infrastructure investment
- Direct growth to core settlement areas



# Growth Management Map



## Core Settlement Areas

-  Municipal Areas
-  Settlement Nodes
-  K'ómoks First Nation Lands
-  Sage Hills Sports and Education Node
-  Settlement Expansion Areas
-  Agricultural Areas within Municipal Areas

## Rural Areas

-  Rural Settlement Areas
-  Agricultural Areas

## Resource Areas and Provincial Parks

-  Resource Areas
-  Provincial Park

# How is the RGS implemented?

- Official Community Plan policies
- Regional Context statements
- Agreements with Provincial agencies and First Nations
- Regulatory bylaws



# Decision Making

